

TUESDAY OCTOBER 16, 2012

MORNING

08:00 Coffee

08:15 Using Clumped Isotopes to Understand Early Diagenesis

Peter K. Swart, Monica M. Arienzo, Sean T. Murray, Yula Hernawati, James S. Klaus, and Donald F. McNeill

08:35 New Insight into Dolomitization using Clumped Isotopes

Sean T. Murray, Monica M. Arienzo, and Peter K. Swart

08:50 Speleothems: A Model System for the Study of Fluid Inclusions and Clumped Isotopes

Monica M. Arienzo, Sean T. Murray, Hubert B. Vonhof, and Peter K. Swart

09:10 Coffee Break

09:50 Seismic and GPR Imaging of Fractures in Carbonate Reservoirs using 3D Diffraction Responses Caused by Fracture Intersections

Mark Grasmueck, Tijmen Jan Moser, and Michael A. Pelissier

10:10 4D GPR for Characterization of Fluid Flow in Carbonates: Insights from Structural- versus Stratigraphic-controlled Domains and Comparison with Eclipse Dynamic Modeling

Pierpaolo Marchesini, Mark Grasmueck, Gregor P. Eberli, and Ralf J. Weger

10:30 Future Projects & Discussion

12:15 Lunch

TUESDAY OCTOBER 16, 2012

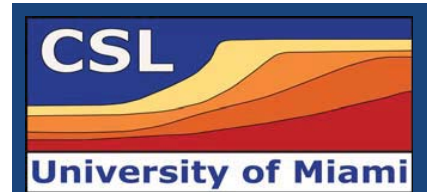
AFTERNOON

13:15 Introduction to Field Trip

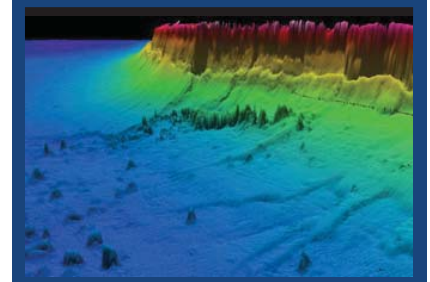
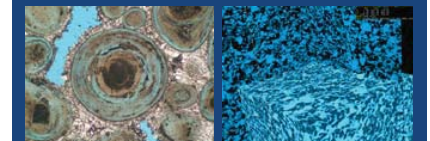
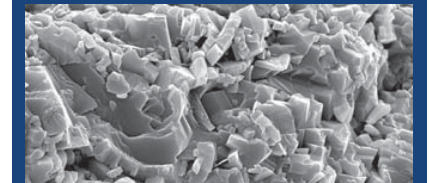
13:45 Core Workshop: Reef successions in the Dominican Republic and Pleistocene Oolitic Grainstones

15:00 Fieldtrip departs

UNIVERSITY OF MIAMI
ROSENSTIEL
SCHOOL of MARINE &
ATMOSPHERIC SCIENCE



CSL
CENTER FOR CARBONATE RESEARCH



ANNUAL REVIEW
MEETING
October 15 - 16, 2012

MONDAY OCTOBER 15, 2012 MORNING

- 08:30 Coffee**
- 09:00 Welcome and Introduction**
Gregor P. Eberli
- 09:10 Sea-Level Oscillations during the Sea-Level Highstands: Evidence from the Basinal Section off Great Bahama Bank**
Gregor P. Eberli
- 09:30 Evidence and Amplitude of Sea-Level Oscillations during the Last Interglacial Highstand (MIS 5e) from the Bahamas**
Kelly L. Jackson, Gregor P. Eberli, Samuel B. Reid, Donald F. McNeill, and Paul (Mitch) Harris
- 09:50 Late Quaternary Growth History of Glover's Reef, Belize: Insights into Reef Distribution and Quaternary Sea Level**
Noelle J. Van Ee, Gregor P. Eberli, Eberhard Gischler, and Flavio Anselmetti
- 10:10 Coffee Break**
- 10:40 Influence of Depositional and Diagenetic Heterogeneities on Hydraulic Conductivity in Reefal Carbonates: Preliminary Packer Injection Tests in the Southern Dominican Republic**
Viviana Diaz, James S. Klaus, Donald F. McNeill, and Peter K. Swart
- 10:55 Origin and Diagenesis of Microbialites on the Uplifted Atoll of Maré, New Caledonia**
Chelsea Pederson, Donald F. McNeill, James S. Klaus, and Peter K. Swart
- 11:15 Bacterial Community Characterization and Functional Gene Diversity of Oolitic Grains from Great Bahama Bank**
Mara R. Diaz, Alan M. Piggot, Gregor P. Eberli, and James S. Klaus
- 11:30 Pore Structure and Petrophysical Characterization of Microbialites**
Gregor P. Eberli, Ralf J. Weger, and Giovanna della Porta
- 11:45 Rock Fluid Interaction: How Dissolution Induced Changes in Pore Structure Affect Acoustic Velocity**
Ralf J. Weger, Peter K. Swart, Gregor P. Eberli, and Mark Knackstedt
- 12:00 Lunch**

MONDAY OCTOBER 15, 2012 AFTERNOON

- 13:15 New Insights into Slope Processes from the Bahamas and West Florida**
Gregor P. Eberli, Donald F. McNeill, Thierry Mulder, Emanuelle Ducassou, Dierk Hebblen, Claudia Wienberg, and Paul Wintersteller
- 13:45 Variability of Slope and Basin Floor Morphology along Southwestern Great Bahama Bank**
Andrew Jo, Gregor P. Eberli, and Mark Grasmueck
- 14:05 Composition of the Cold-Water Coral Mound "Matterhorn" and It's Surrounding Sediments in the Straits of Florida**
Rani Sianipar, Gregor P. Eberli, and Emanuelle Ducassou
- 14:20 Petrophysical Perspective of Cretaceous-Tertiary Re-deposited Carbonates from The Apennines and The Adriatic Sea, Italy**
Irena A. Maura, Gregor P. Eberli, and Daniel Bernoulli
- 14:40 Coffee Break**
- 15:15 Sedimentology, Geometries and Link to the Subsurface from a Field-Scale Analog - The Sierra de la Vaca Muerta**
Michael Zeller, Samuel B. Reid, David L. Giunta, Ralf J. Weger, Gregor P. Eberli, and Jose Luis Massaferrro
- 15:45 Decoupled Inorganic and Organic Carbon Isotope Records: A Global Signal Unrelated to Global Carbon Cycling?**
Amanda Oehlert and Peter K. Swart
- 16:05 Application of Cavity Ringdown Spectroscopy to Stable Isotopic Monitoring of CO2 Sequestration during Enhanced Oil Recovery**
Benjamin T. Galfond, Daniel D. Riemer, and Peter K. Swart
- 16:20 Sub-Micron Digital Image Analysis (BIBSEM-DIA), Pore Geometries and Electrical Resistivity in Carbonates**
Jan H. Norbistrath, Gregor P. Eberli, Ralf J. Weger, Klaas Verwer, Janos Urai, Guillaume Desbois, and Ben Laurich
- 16:45 Reception in Commons**
- 18:15 Return to Hotel**